

C6 Fangs Installation Instructions

by SacCityCorvette

Thank you for purchasing the C6 Fangs from SacCityCorvette. Knowing that Corvette owners want nothing less than the best, we strive for the highest quality and innovativeness in our products and most importantly customer satisfaction. We hope you are pleased with your purchase and feel it was money well spent. If not please let us know at Sales@saccitycorvette.com

Note: We recommend Blue #242 Loctite for this install. It can be purchased at any Automotive parts store.

For the purpose of this installation we are going to be using a C6 Skid Plate/Lower Radiator support that is off of the C6 Corvette for better visibility.



Fig.1 Fit Fang onto Skid Bar.



Fig.2 Adjust Fang to get the best fit on Skid Bar.



Fig.3 Carefully mark only one hole. It's important to be accurate when marking the hole.



Fig.4 Use a center punch to mark the spot where the hole will be drilled. The center punch will help you drill the hole accurately and keep it from walking.



Fig.5 Drill hole with the supplied drill bit that came in your kit. It is very important to drill exactly where you made the punch mark and keep the drill **Parallel** to the skid plate for proper fit of the Fang.



Fig.6 Put a drop of oil on the Self Tapping Screw that came in your kit. Oil is a **MUST!** This will help the self tapping screw cut clean threads.

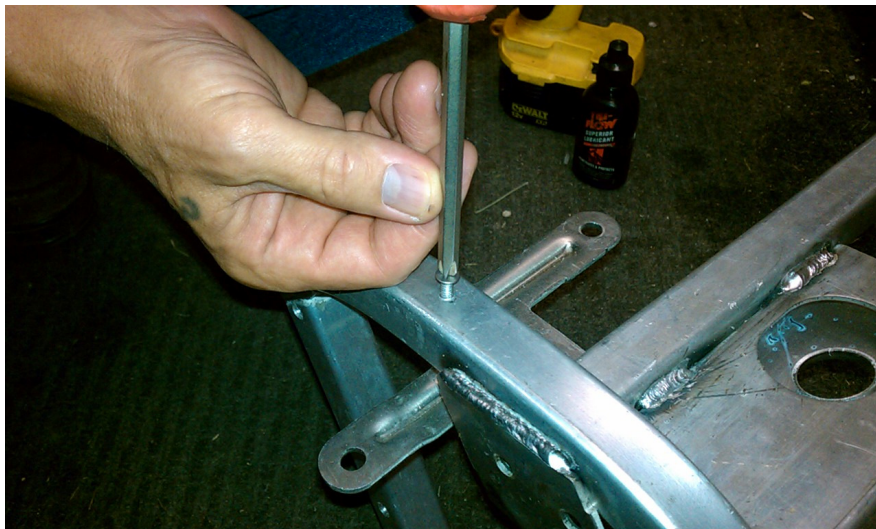


Fig.7 **Note: Do not use power tools** to install screws, aluminum is soft and can strip easily. Align the Self Tapping Screw keeping it parallel to the Skid Plate and carefully thread it in to the newly drilled hole. Do not tighten it, only go about half way in with it. Remember, you're only using it to thread the hole. Now remove it. Using the black screw install the Fang to the Skid Plate. Just **snug** it down to hold the Fang in place so you can mark the other hole.



Fig.8 Hold Fang flush with skid bar and carefully mark and center punch where second hole will be drilled.



Fig.9 Remove Fang and drill second hole keeping drill parallel to Skid Plate.

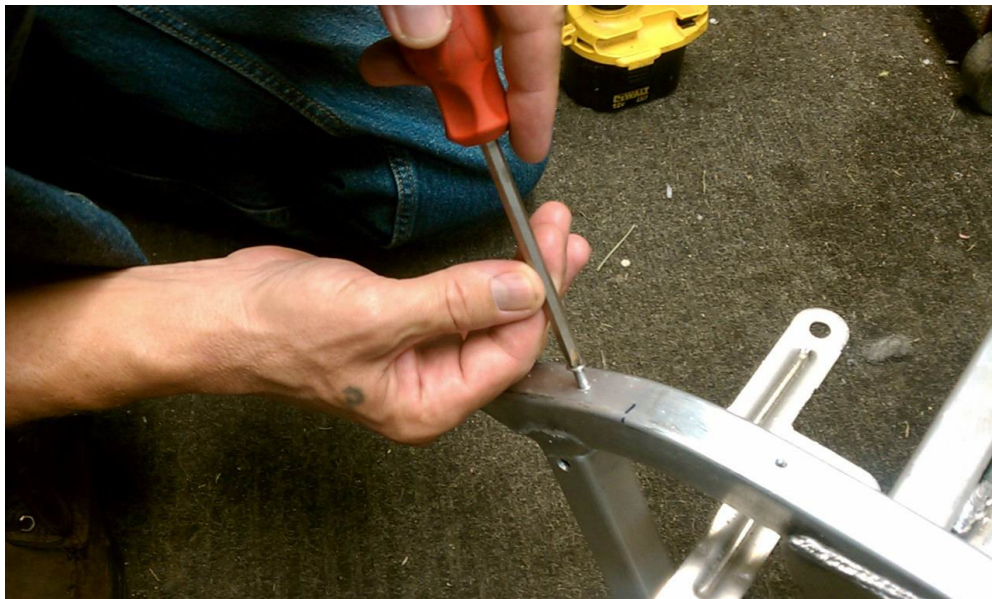


Fig.10 **Important-** Clean the threads of the self tapping screw to get all the metal out of the threads before tapping each hole, then apply a drop of oil to the threads. Keeping it parallel to the skid plate carefully thread it in to the newly drilled hole. **Do not** tighten it, only go about half way in.



Fig.11 . **NOTE:** We recommend using Blue #242 Loctite on the threads of the Black Screws for this step just to make sure they don't come loose. Now install the Fang with the supplied Black screws and down snug it down. Don't over tighten, aluminum threads can strip easily!



Fig.12 The Screws should be just below the surface of the Fang.

Now you have the best protection for your Skid Bars with your
Patent Pending Fangs!